



5. Compact Mode and making Changes to an Activity.

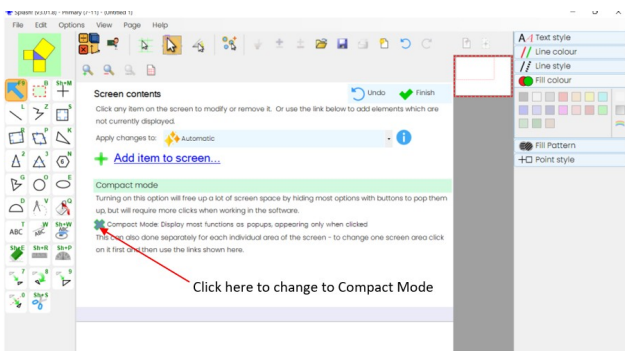
Compact Mode



If you are using a laptop and F10 has no effect, it is likely that the F1-F12 keys are performing system functions such as brightness and volume instead. In this case you need to press the "Fn" key as well to get the normal F10. This can usually be changed in the manufacturers settings on the device (not the Windows settings)

Compact enables users to access the tools and palettes and function buttons more easily using pop up menus.

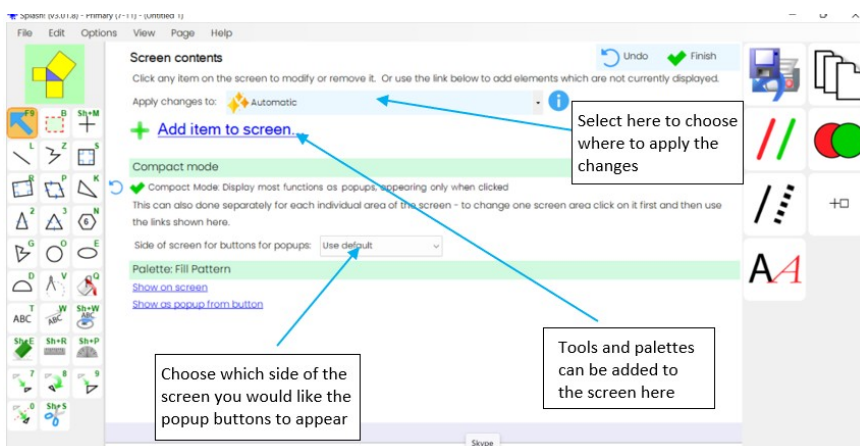
To change to compact mode press F10 on the keyboard and then select "Compact Mode". Compact mode displays most functions as popups, appearing only when clicked. The position of the functions such as the palettes can also be changed here, depending on which areas of the screen the user is most easily able to access.



Once compact mode is selected, the palettes on the right-hand side will appear in a "pop up" format. Other changes can also be made on this screen if needed:

Select the tab labelled "Apply changes to". The options here will allow you to have compact mode across all the user's activities, for Geometric drawing only or just for the current document that is being used.

You can also add tools or palettes to the work area by selecting "Add item to Screen":

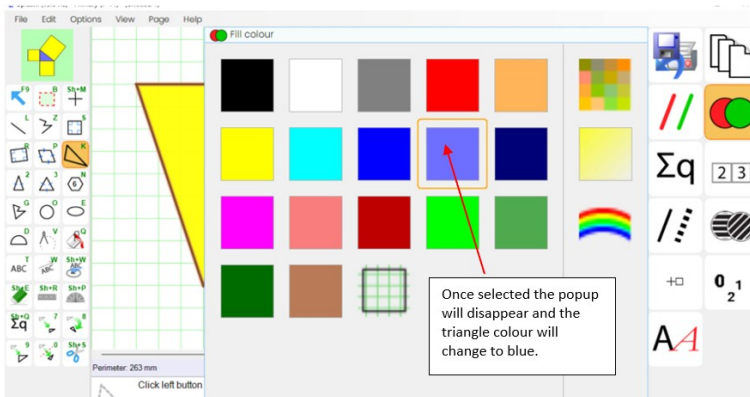


When you are ready, select "Finish" in the top right-hand corner (or press F10 again)



Handout 5: Compact mode

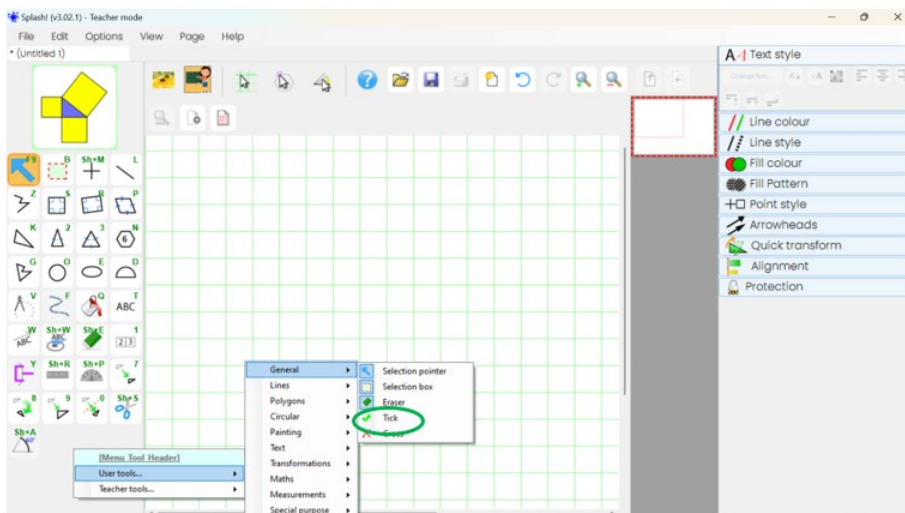
Now when I draw, for example, a triangle and I want to change the colour. I select the button for the colour palette on the right-hand side. This will open a popup which displays all the colours in a larger, more accessible format. Once a new colour is selected the popup will close.



Making Changes to an Activity

The tools and palettes that are displayed in Splash in each different Activity can now be changed when using the Activity.

From any Activity, go into Teacher Mode and right click on the tools area on the left hand side. This will open up a menu where you can choose whether to add or remove tools from either for the user or the teacher. In this image I want to add the green tick to the user menu. Once selected it will appear in the user's list of tool.



You can also right click onto an individual tool and you will be asked whether you want to hide it in Teacher mode or Pupil mode.



In version 3 you can also do this in the F10 screen. In this screen clicking a tool on the left will offer an option to hide it; and clicking anywhere in the tools area will show a link to add another tool. Changes here affect the current user - so do this while still in user mode.

Changes can also be made to the palette list on the right hand side. This is most easily done in the F10/Screen contents. If you then click on any existing palette there is a link to hide it. If there are alternative versions available, then another link "Change which version of this palette is displayed" will allow you to choose between them.



Handout 5: Compact mode

You can add a palette which is not currently displayed by clicking the large "Add item to screen" link at the top of the F10 screen. All the palettes are in one sub-menu.

You can move and dock or undock each palette at any time (not just in the F10 screen) by clicking and dragging on the its title. In undocked they can be resized by dragging the bottom-right corner of the palette. When docked the column can be made wider or narrower by dragging the edge of the column.

Palettes in the settings screen

You can also select the palettes in the settings screen. This is reached by selecting from the menu: *Options > Edit Settings > Edit settings for [name]*. Then select the page *Screen Contents and Layout > Palettes*.



You can also get to this screen by right-clicking the header of any palette and selecting "Choose Palettes..."

Any places you have already made changes can be identified by the blue "undo" arrow symbol next to the name of the palette. Clicking the arrow will revert to the default. So if you've hidden a palette, clicking the arrow will return the palette to the workspace.

Select here if you want to change how the palette appears on the screen.

"Choose which" is shown when there are different palettes to choose from. For example, there are 3 different number keypad options, depending on the Key Stage required.

Next to each palette there is a light blue box showing its current status. If you click the blue button, you will be presented with different options. The default is generally the best option so only make a change if needed for the user. For example, most palettes appear only when the applicable tool is selected. If you want the palette on the screen all the time, either docked or floating, then select the first option below: